

# WiFi Bridge

WiFi Bridge (4065599) can be used to connect the Sentio Central Control Unit to a router via WiFi.

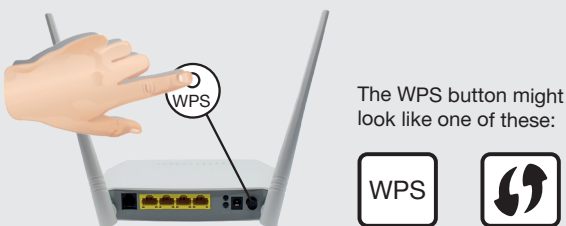
## 1. Power on device

- Plug the WiFi Bridge in a power socket close to the Sentio Central Control Unit.



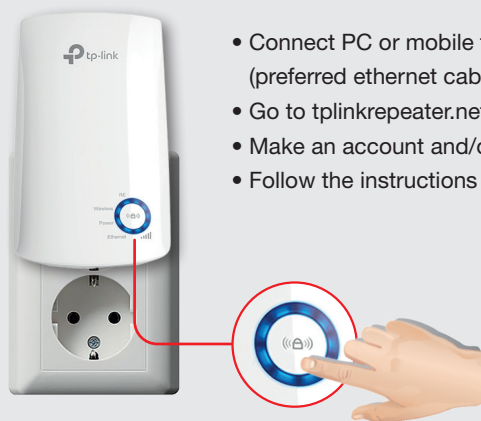
## 2a. Set-up via WPS

- Press WPS button on router
- Press WPS button on WiFi bridge device

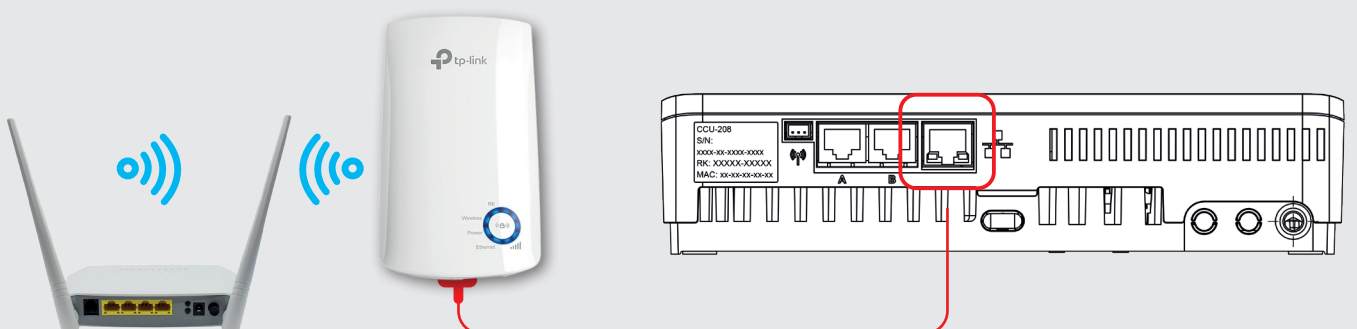


## 2b. Set-up via PC

- Connect PC or mobile to WiFi bridge (preferred ethernet cable to PC)
- Go to [tplinkrepeater.net](http://tplinkrepeater.net)
- Make an account and/or login
- Follow the instructions on the site

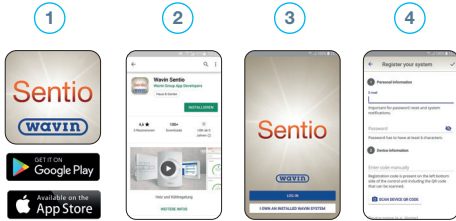


## 3. Connect to the Sentio Control Unit

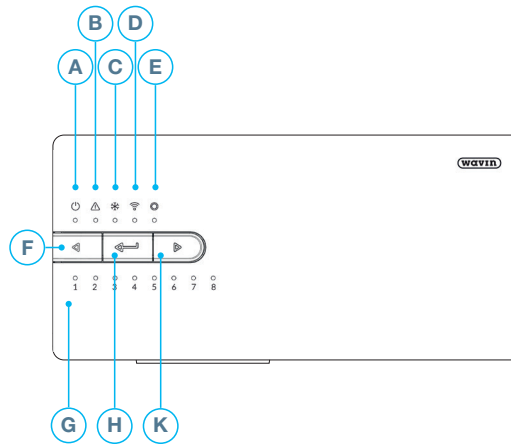


## Wavin Sentio App

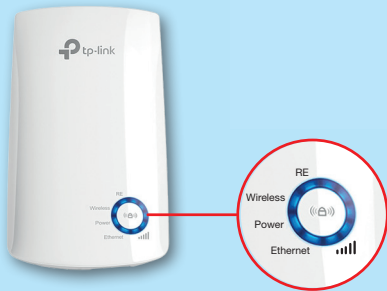
1. Download the app
2. Make an account
3. Scan the QR on the control unit
4. Press the learn button(H) once



## Sentio Control Unit LED Info



## WiFi Bridge LED info



LED	Status	Indication (for range extender mode)
RE	On/Off	The extender is connected or not connected to your router's wireless network
	Blinking	WPS connection is in progress
Wireless	On/Off	The extender's wireless function is enabled or disabled
Power	On/Off	The extender is on or off
	Blinking	The system is starting up or firmware upgrade is in progress
(Signal strength)	On/Off	Indicates the WiFi connection between the extender and router. More lit LEDs indicates a better signal strength
Ethernet	On/Off	The Ethernet port is connected or not connected to a powered-on device

For more information on Sentio see the Technical Manual at [www.Wavin.com/Sentio](http://www.Wavin.com/Sentio)

Letter	LED/Button	Function	Light	Meaning
A		Status	Off	No power supply of the unit
			Green On	Power on – everything ok
			Red On	Bootloader is working
B		Warning	Yellow flash	Error, e.g. connection to peripheral lost
			Yellow slow flash	Bootloader is working / preparing for update
			Yellow fast flash	Update is running
C		Cooling	Blue On	Cooling is active
D		LAN status	Green On	Connection to LAN and cloud service
			Green flash	Connected to LAN but no cloud service
			Green fast flash	Learn mode active for registering unit to the app
			Blue On	Auto update has found a new version and is ready to update
			Blue flash	Auto update is ready to check for a new version
			Blue fast flash	Auto update is checking a new version
E		Global Peripheral channel	Green On	Global peripherals enrolled
			Red flash	Enrolling mode (global peripherals can be connected)
F		Channel Selection	-	Select a channel by moving it to the left
G	1 – 16	Actuator channels	Red On	Heating
			Green On	Idle – no heating / no cooling
			Blue On	Cooling
			Purple On	Idle – Room without thermal actuator; e.g. room with Smart Radiator Thermostat
			Cyan On	Idle – Output used for special purposes E.g. External Actuator
			Red flash	Enrolling mode (peripherals can be connected)
			Red fast flash	Output overloaded, heating demand
			Green flash	Missing periphery
H		Enter		Confirm action, Learn mode to connect to the APP, Reset a channel (hold 10s), Factory Reset (hold 20s)
K		Channel Selection		Select a channel by moving it to the right



Wavin is part of Orbia, a community of companies working together to tackle some of the world's most complex challenges. We are bound by a common purpose: To Advance Life Around the World.



Wavin B.V. World Trade Center (WTC) | Wavin Tower F9 Schiphol Boulevard 425 | 1118 BK Schiphol The Netherlands | Internet [www.wavin.com](http://www.wavin.com) | E-mail [info@wavin.com](mailto:info@wavin.com)

© 2022 Wavin Wavin reserves the right to make alterations without prior notice. Due to continuous product development, changes in technical specifications may change. Installation must comply with the installation instructions. All rights reserved. No part of this book may be reproduced, reprinted or utilized in any form or by any means, whether electronic, mechanical, by photocopies, recordings, or other means, now known or hereafter invented, without prior written permission from the publisher.









